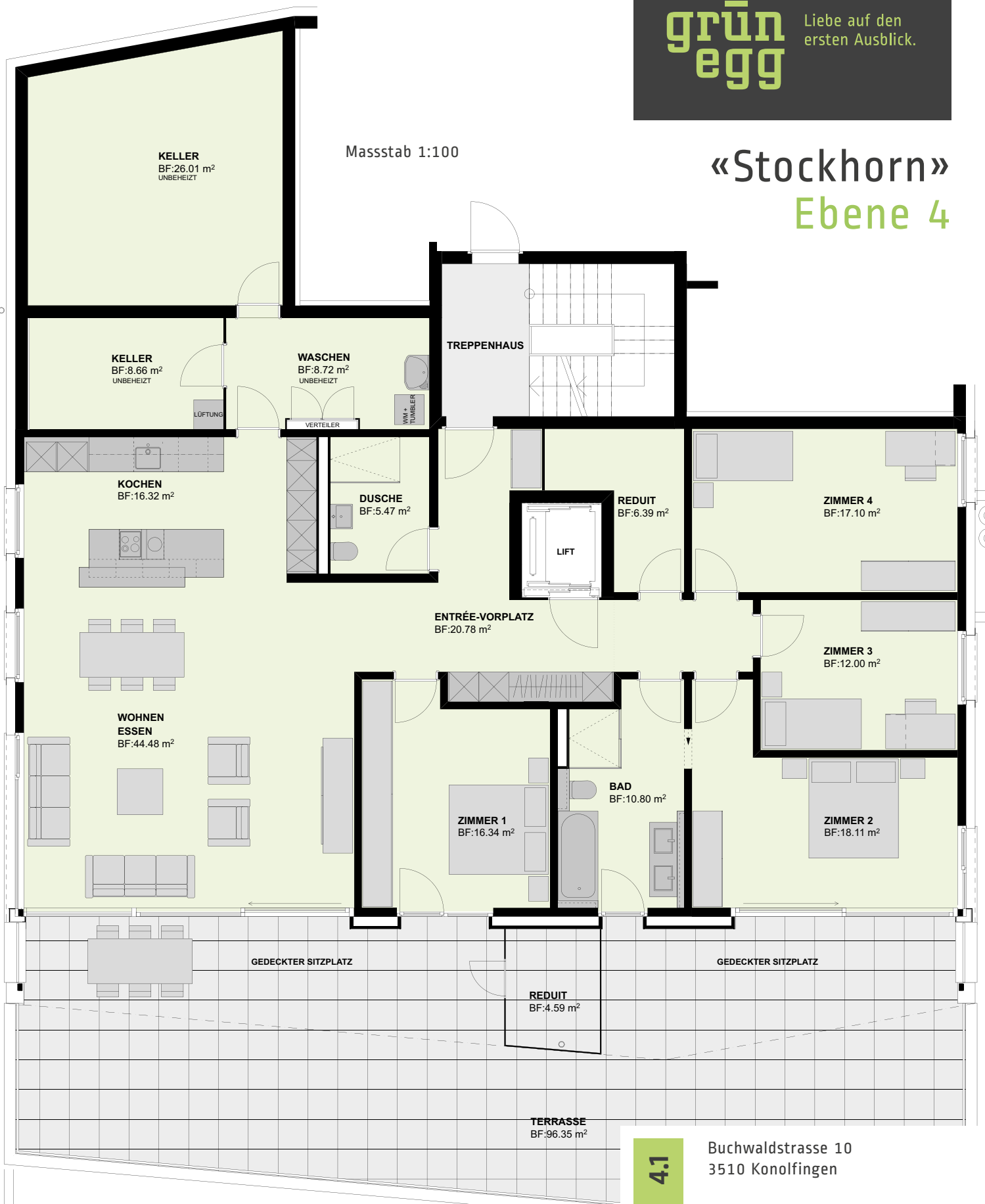
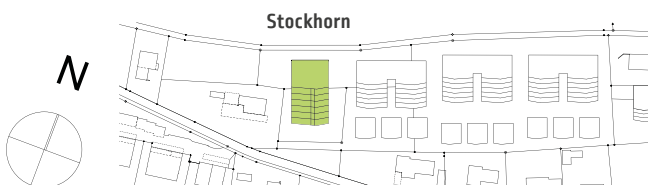


Masstab 1:100

# «Stockhorn» Ebene 4



## Situationsplan



4.1

Buchwaldstrasse 10  
3510 Konolfingen

## 5,5-Zimmer Wohnung

Nettowohnfläche 167.79 m<sup>2</sup>  
Nebenräume 47.98 m<sup>2</sup>  
Terrasse 96.35 m<sup>2</sup>

Bruttofläche 312.12 m<sup>2</sup>

**Stockhorn**